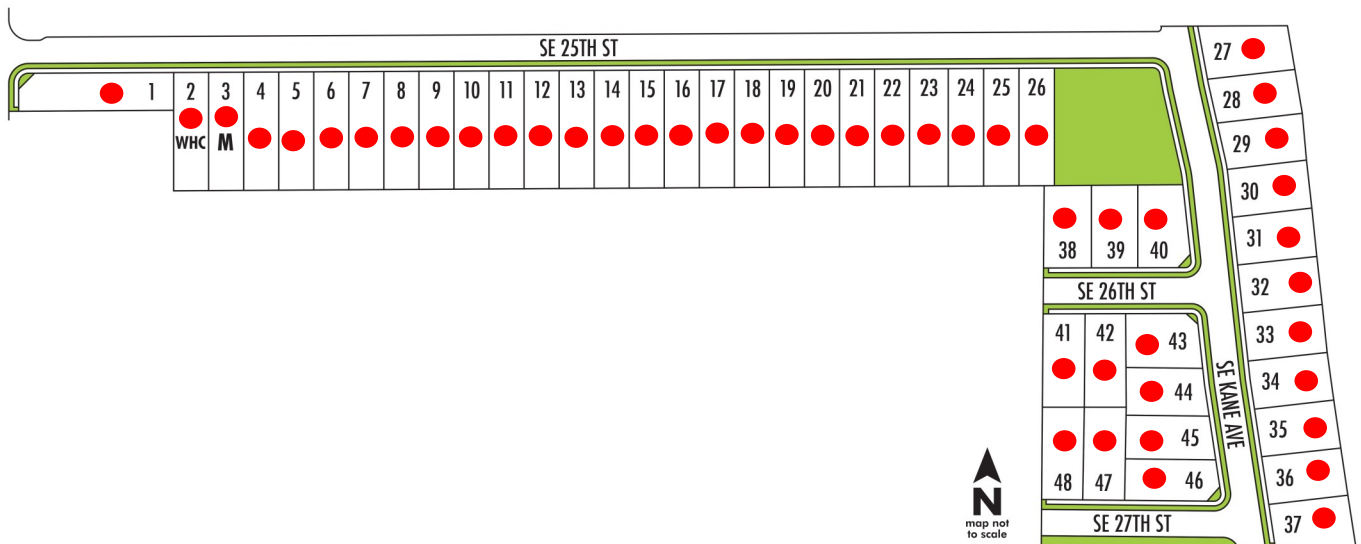


Madelynn Place

Homesites

PRELIMINARY



- CONTINGENT
- RESERVED
- SOLD

2944 SE 25th St. | Gresham, OR 97080 | 844-557-6023 | LennarPortland.com/Madelynn

LENNAR

Siteplans and community maps are conceptual in nature and are merely an artist's rendition. These maps are solely for illustrative purposes and should never be relied upon. The past, present, future or proposed roads, easements, land uses, conditions, plat maps, lot sizes or layouts, zoning utilities, drainage, land conditions or development of any type whatsoever, whether reflected on the siteplan or map, or whether outside the boundaries of the siteplan or map, may not be shown or may be incomplete or inaccurate. The past, present, future or proposed roads, easements, land uses, conditions, plat maps, lot sizes or layouts, zoning utilities, drainage, land conditions or development of any type may or may not change in the future. It is not uncommon that any of the foregoing can change without notice to you. You should never rely on the accuracy of this map in making decisions relative to purchasing any property. We reserve the right to make changes at any time without notice. Map not to scale. Copyright © 2019 Lennar Corporation. All rights reserved. Lennar and the Lennar logo are U.S. registered service marks or service marks of Lennar Corporation and/or its subsidiaries. CCB#LENNAN1893QG, CCB#195307, 4/19